

CAN YOU THINK OF SOMEONE WHO...?

...IS COOL, CALM AND COLLECTED



is relaxed, in control, not nervous

... IS A SOCIAL BUTTERFLY



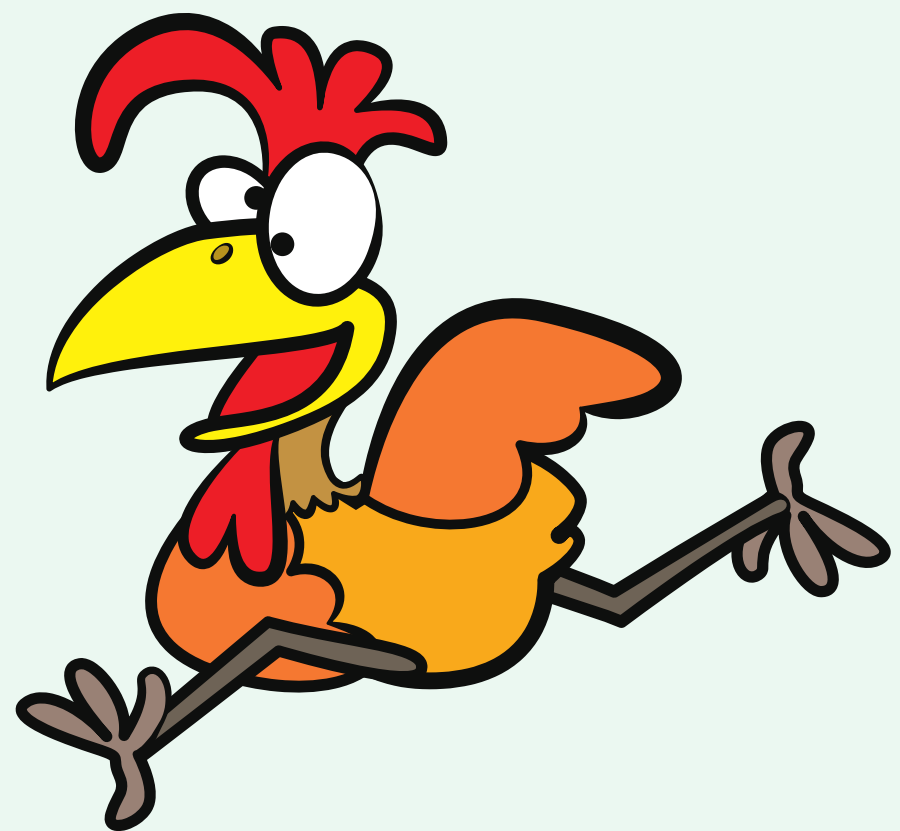
a person who likes meeting new people

... HAS A SWEET TOOTH



likes sweets and chocolate

... RUNS AROUND LIKE A HEADLESS CHICKEN



is so busy, often with so much to do they don't know where to begin!

CAN YOU THINK OF SOMEONE WHO...?

... IS A HAPPY-GO-LUCKY



is cheerfully unconcerned about
the future

... IS A PARTY POOPER



a wet blanket, someone who
spoil the fun

... IS A SUN WORSHIPPER



a person who loves sunny
and hot weather

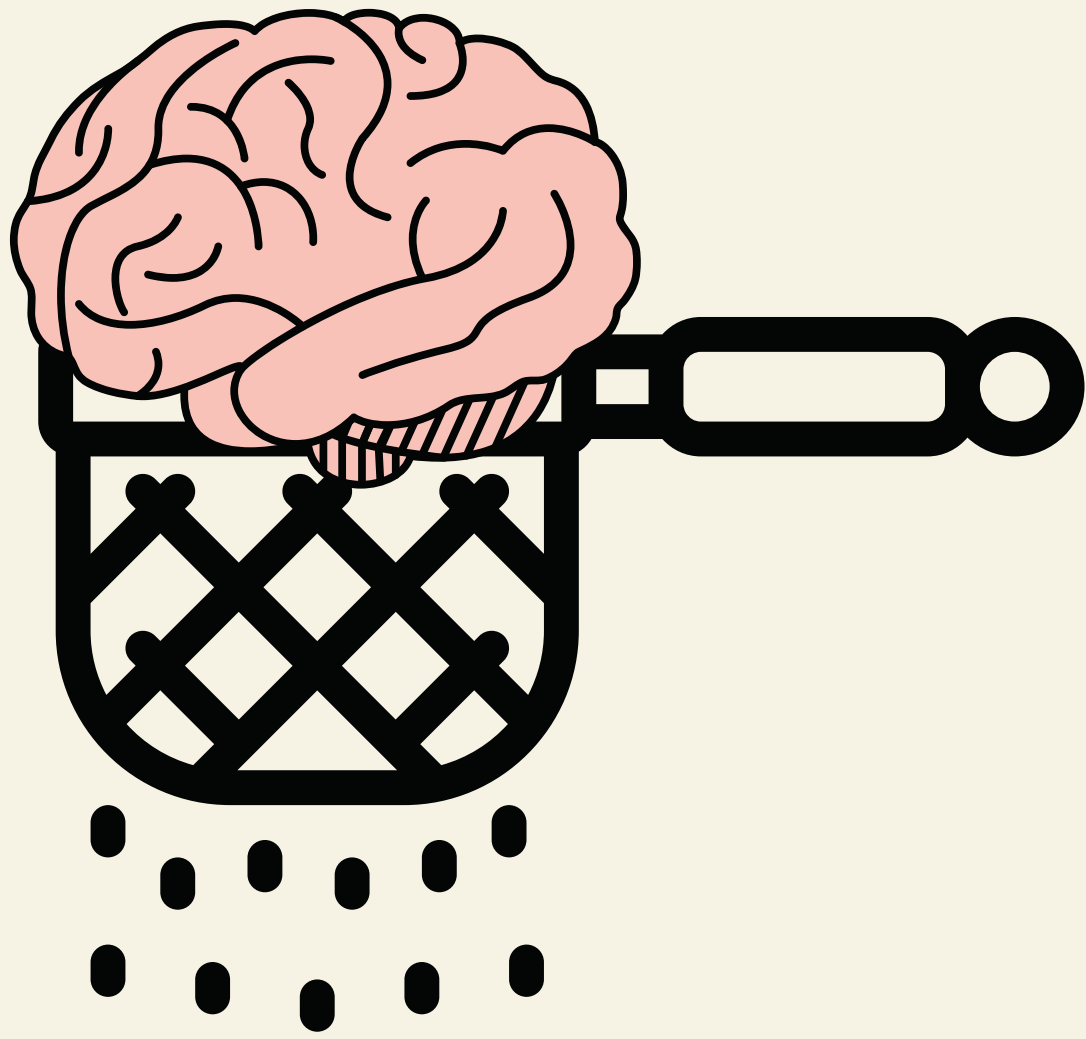
... OFTEN GETS ITCHY FEET



can't stay in one place for long and
often has the urge to travel

CAN YOU THINK OF SOMEONE WHO...?

... HAS GOT A BRAIN LIKE A SIEVE



forgets things quickly, has a very
bad memory

... HAS A POTTY MOUTH



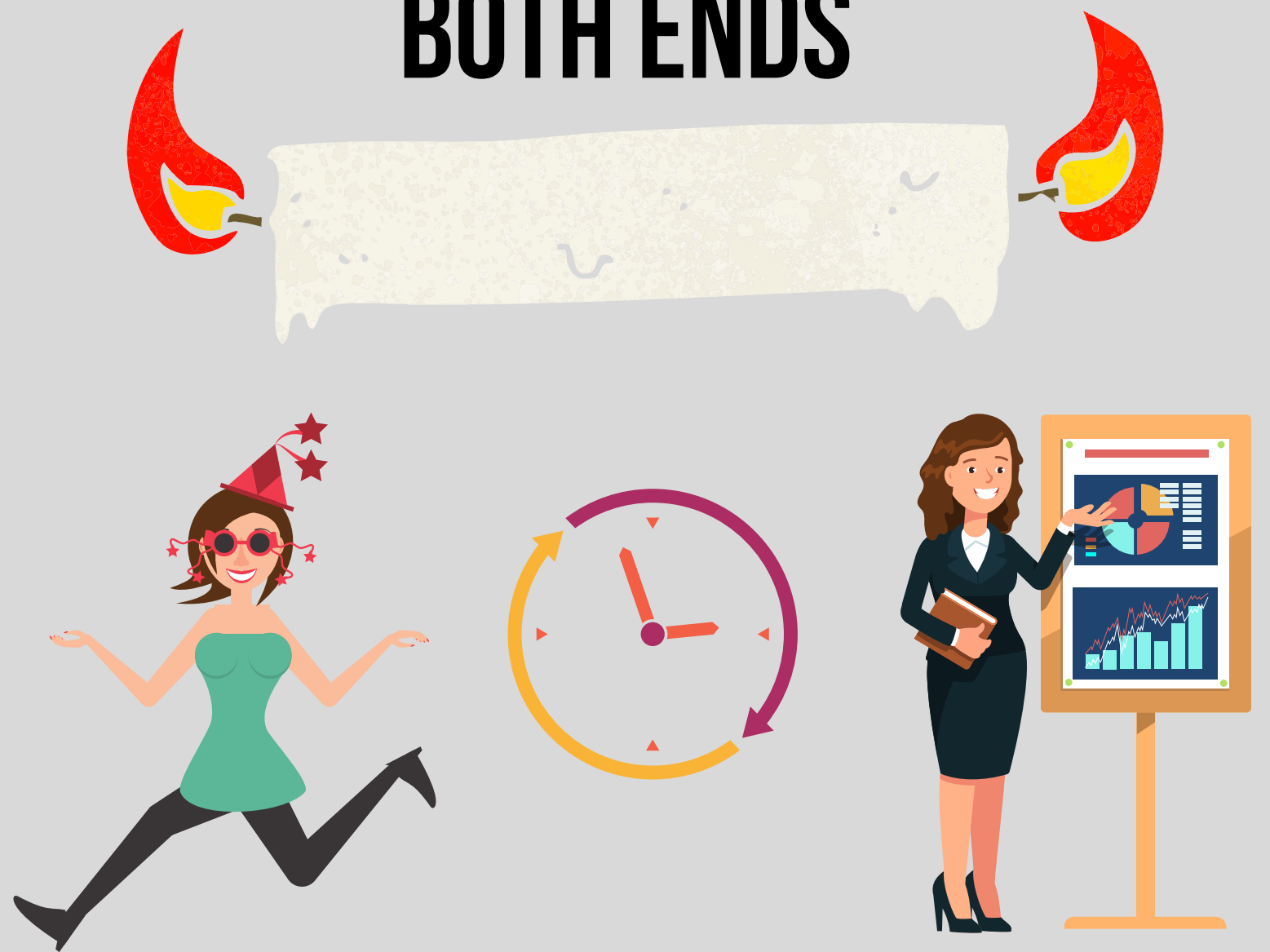
swears a lot, says lots of
bad words

**... IS A GLUTTON FOR
PUNISHMENT**



takes on unpleasant tasks or
unreasonable amounts of work

**... BURNS THE CANDLE AT
BOTH ENDS**



wakes up early and goes to bed late,
usually because of too much partying